

## Highlights from ITCOT Project Desk



### Corporate Social Responsibility :

ITCOT received a commendation letter from Chennai Port Trust for training beneficiaries under their CSR programme in Fashion design & Computer systems. 86% of beneficiaries were women and in all 94% of total beneficiaries were placed at the end of the three month programme.

### Glimpse of recent consultancy projects handled at ITCOT :

**Healthcare:** TEVR on 37 Eye Care Hospitals / Centres in Assam, Bihar, Chattisgarh, Delhi, Kerala, Karnataka, Maharashtra, MP, Odisha, Rajasthan, TN, UP & West Bengal for Vasani Eye Care Ltd, a leading Healthcare Company

**Wind Energy :** Report for 3 X 250 KW Wind Farm at Car-Nicobar Island for C-WET

**Container Freight Station:** Market survey & Feasibility for a CFS project to be located near Ennore port.

**Valuation :** Valuation of Five Star Hotel in Chennai City.

**Real Estate :** TEVR on 1.1 Million Sq Ft, 710 Flats housing project at Greater Noida, UP for a Leading builder.

**CDR / Restructuring :** CDR- Restructuring report for Rajalakshmi Sugars & Chemicals Ltd on behalf of SBI.

**Lenders Engineer :** 5 MW Solar power project in Karnataka for Essel Group.

**Solar Power :** DPR for 10MW Solar PV Power Project coming up in Rajasthan.

**Best Practices Learning :** Workshop on Capacity enhancement for Selection of consultants for Govt, PSU & Bank officers sponsored by Consultancy Development Centre, Delhi.

## India / Global Business Updates

**Raining offers for Solar Mission :** First batch of Phase II of JN National Solar Mission received heavy bidding with 122 projects from 68 bids put by 58 developers for 2170 MW capacity against 750 MW offered for allocation. This augurs well for solid grounding of solar power and has potential to open up Rs 3500 Cr of bank funding into this sector

**Business growth drivers :** A global survey of 1344 CEOs in 68 countries by PwC reveals that growth drivers will come primarily from technological advances followed by demographic shifts and shift in global economic power.

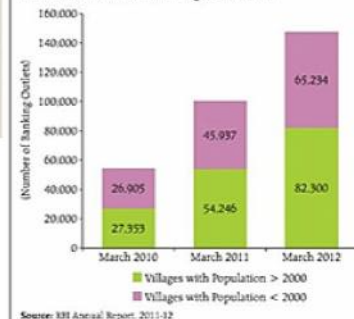
## Economy & Banking

### Financial Inclusion :

India has made significant progress in financial inclusion. As a last mile connectivity with human touch, banking outlet expansion into villages with less than 2000 population has been targeted by Government.

Banking outlets in villages less than 2000 population grew to 240% in 2012 over 2010.

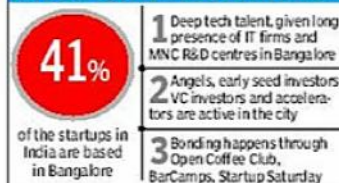
Financial Inclusion : Villages Covered



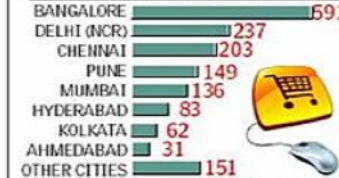
Source: RBI Annual Report, 2011-12

## Score Board for STARTUPS

### BANGALORE HAS THE EDGE...



### ...AS STARTUPS MUSHROOM ACROSS INDIA

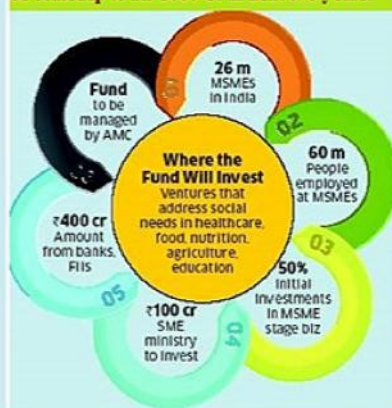


### ...AND ECOM TAKES THE BIGGER BYTE



## FILLIP TO INNOVATION

**Boon to MSME: Govt launches India Inclusive Innovation Fund with Rs 500 corpus which will be scaled up to Rs 5000 Cr in next two years.**



## ITCOT Services in Project & Business Consulting

- \* Feasibility Report / DPR
- \* Techno Economic Viability Report (TEVR)
- \* CDR/Viability / Restructuring Reports
- \* Market Survey
- \* Valuation / Due-Diligence
- \* Merger / Acquisition/ Asset Sale
- \* Recovery Services & Asset Management
- \* Debt / Special Situation Fund sourcing
- \* Lenders Engineer / Owners Engineer
- \* Project Engineering & Project Management services
- \* Corporate Social Responsibility Programmes
- \* Training & Assessment

Credit is acknowledged for news items sourced from : ET /TOI/ Hindu/Business Standard/RBI

Feed back to :  
biztimes@itcot.com,  
**ITCOT Consultancy and Services Ltd**  
(Joint Venture of ICICI, SIDBI, IFCL, SIPCOT, TIIC, SIDCO & Banks)  
50-A, Greams Road, Chennai 600006.  
Tel : 044-42936800 Fax : 044-28293512  
email : itcot@vsnl.com  
Chennai . New Delhi . Mumbai . Bangaluru  
[www.itcot.com](http://www.itcot.com)